

Current Funding Status

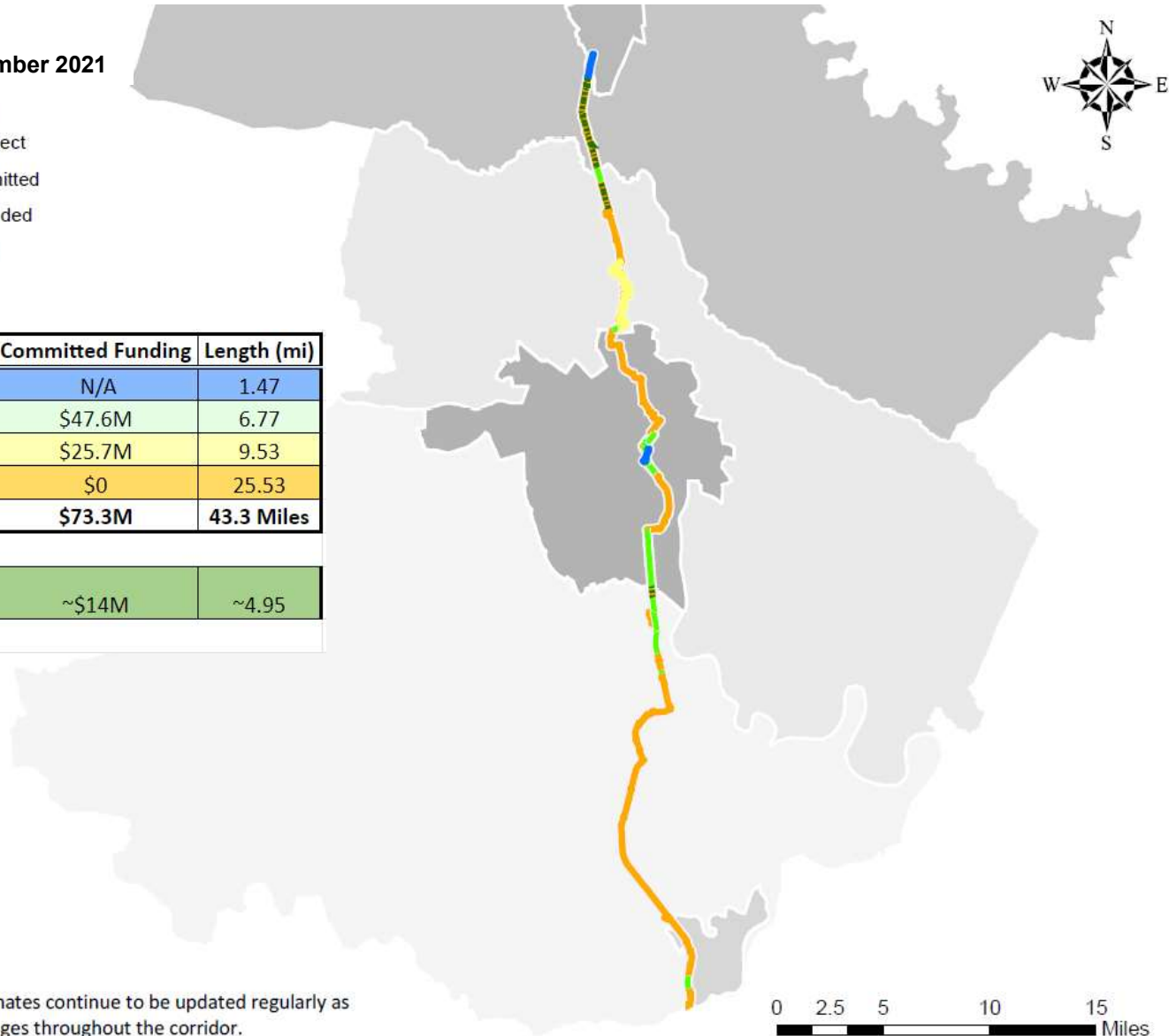
Fall Line Trail Status* September 2021

- Completed
- Funded Project
- - - Local Committed
- Partially Funded
- Not Funded

Status	Cost	Committed Funding	Length (mi)
Completed	N/A	N/A	1.47
Fully Funded	\$47.6M	\$47.6M	6.77
Partially Funded	\$52.1M	\$25.7M	9.53
Not Funded	\$134M	\$0	25.53
Total	\$234M	\$73.3M	43.3 Miles

Potential Local Commitments		~\$14M	~4.95
-----------------------------	--	--------	-------

1. Funded is ~\$53M State and ~\$20M Local



*Fall Line Trail estimates continue to be updated regularly as funding status changes throughout the corridor.

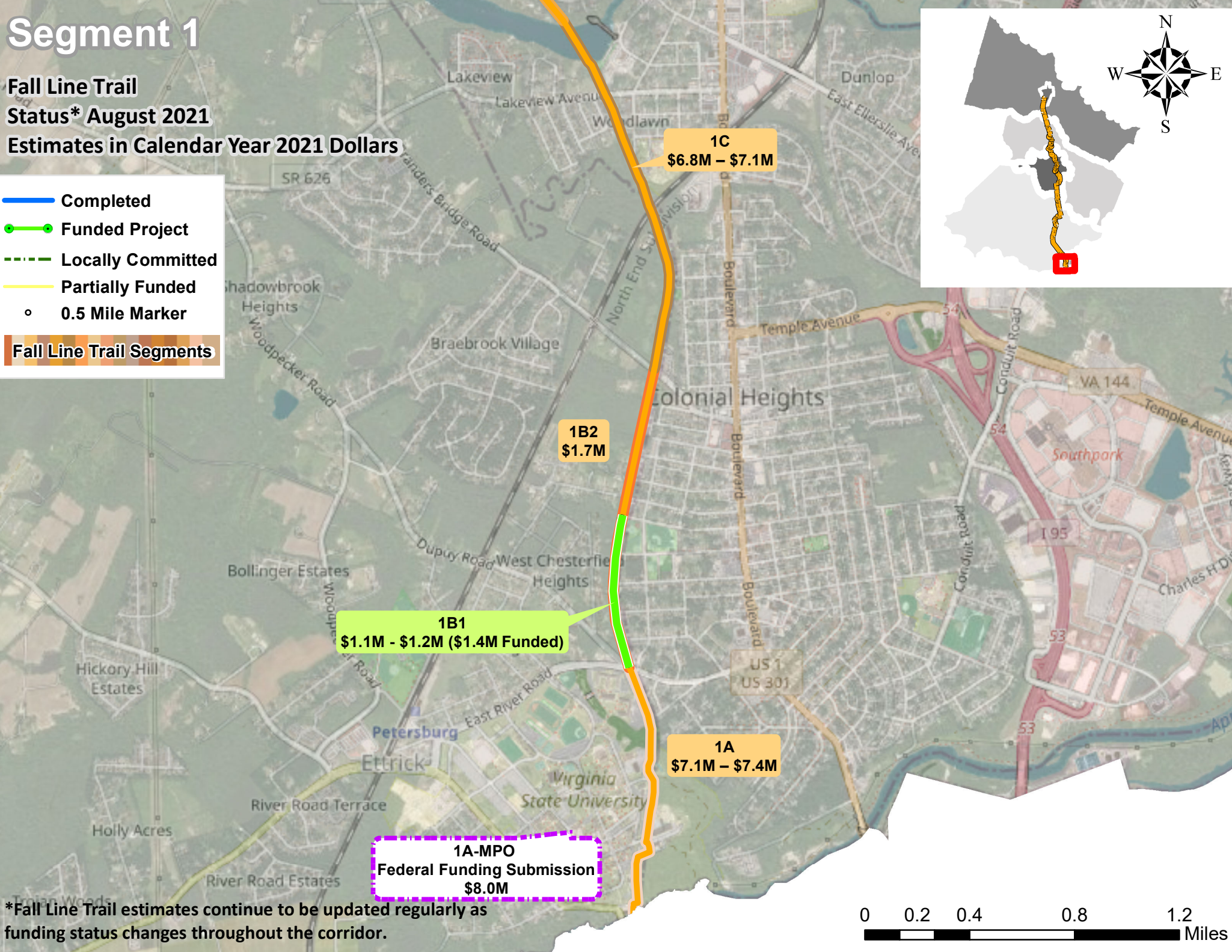
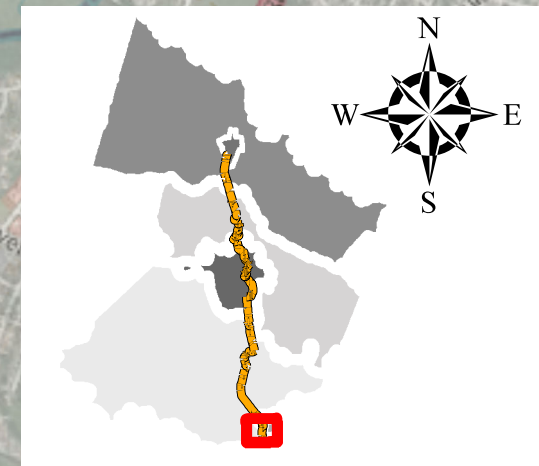


Segment 1

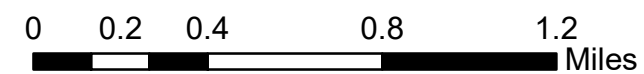
Fall Line Trail
Status* August 2021

Estimates in Calendar Year 2021 Dollars

- Completed
 - Funded Project
 - Locally Committed
 - Partially Funded
 - 0.5 Mile Marker
- Fall Line Trail Segments



*Fall Line Trail estimates continue to be updated regularly as funding status changes throughout the corridor.



Segment 2

Fall Line Trail

Status* August 2021

Estimates in Calendar Year 2021 Dollars

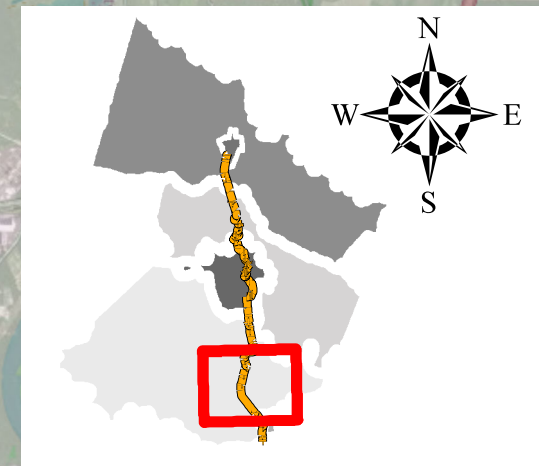
- Completed
 - Funded Project
 - Locally Committed
 - Partially Funded
 - 0.5 Mile Marker
- Fall Line Trail Segments

2D
\$10.1M – \$10.4M

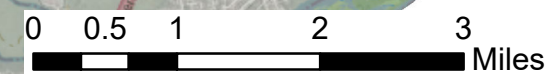
2C
\$6.7M – \$7.0M

2B
\$8.6M – \$8.9M

2A
\$6.9M – \$7.2M



*Fall Line Trail estimates continue to be updated regularly as funding status changes throughout the corridor.



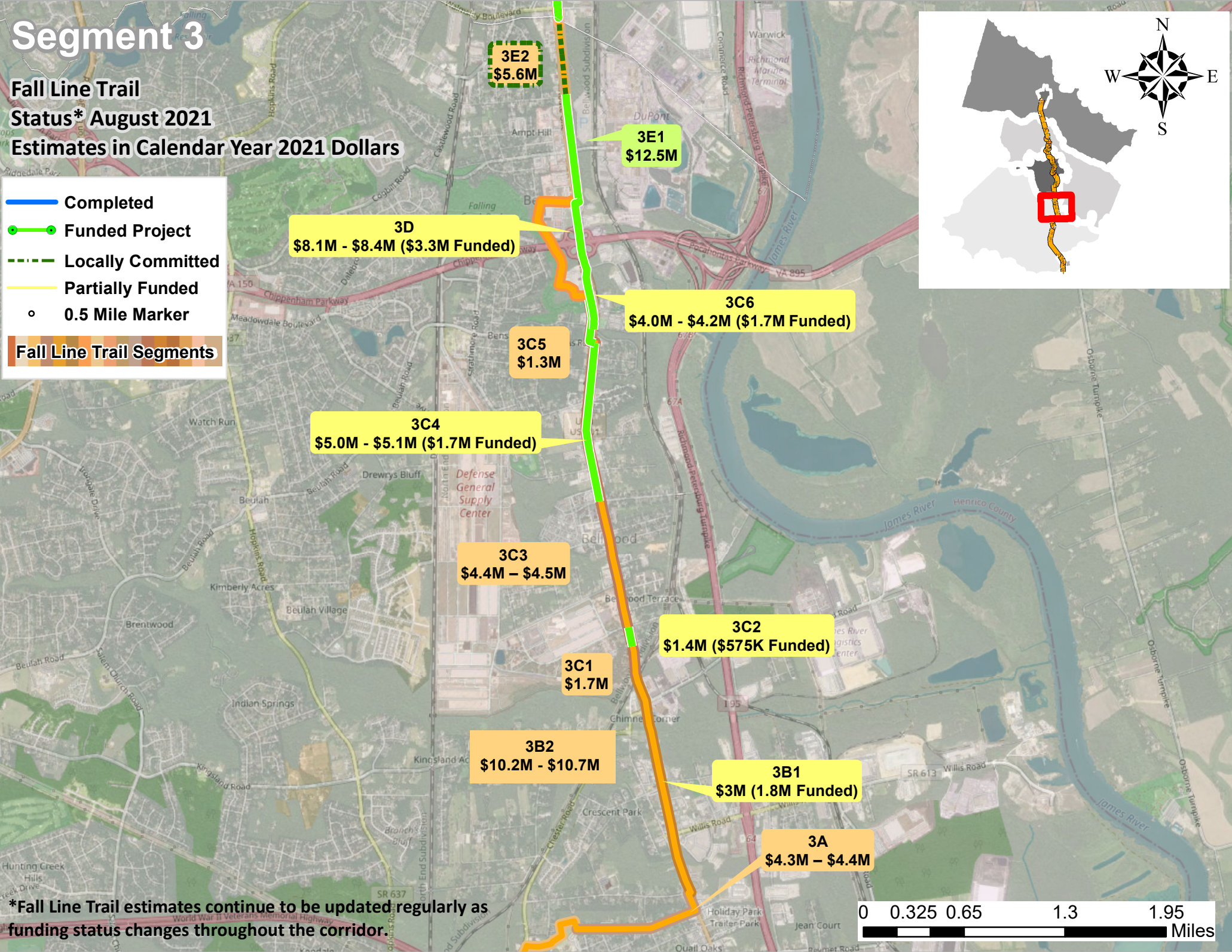
Segment 3

Fall Line Trail

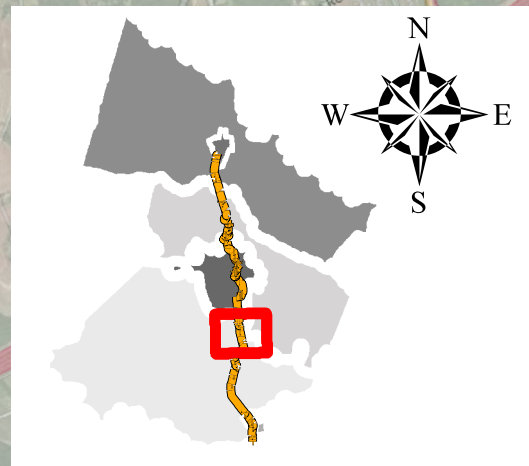
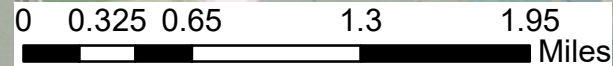
Status* August 2021

Estimates in Calendar Year 2021 Dollars

- Completed
 - Funded Project
 - Locally Committed
 - Partially Funded
 - 0.5 Mile Marker
- Fall Line Trail Segments



*Fall Line Trail estimates continue to be updated regularly as funding status changes throughout the corridor.



Segment 4

Fall Line Trail

Status* August 2021

Estimates in Calendar Year 2021 Dollars

- Completed
 - Funded Project
 - Locally Committed
 - Partially Funded
 - 0.5 Mile Marker
- Fall Line Trail Segments

4E
\$0.00M

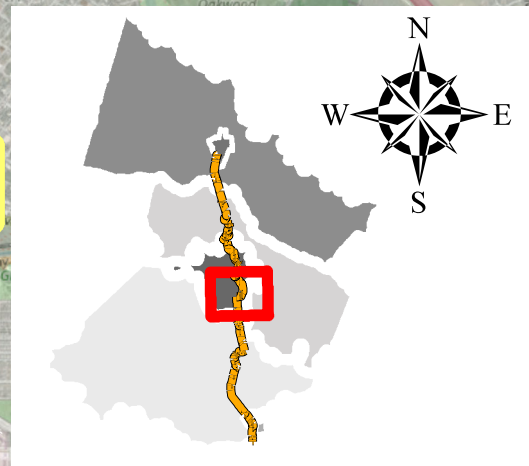
4D2
\$6.8M - \$7.2M

4C2/4D1
\$5.0M - \$5.2M
(Partially Funded with Segment 4C1)

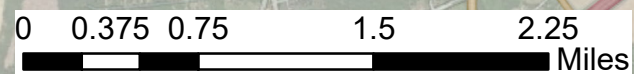
4C1
\$11.1M - \$11.4M
(\$12.4M - Segment 4C1, 4C2, & 4D1)

4B
\$3.8M - \$3.9M

4A
\$16.2M



*Fall Line Trail estimates continue to be updated regularly as funding status changes throughout the corridor.



Segment 5

Fall Line Trail

Status* August 2021

Estimates in Calendar Year 2021 Dollars

- Completed
- Funded Project
- Locally Committed
- Partially Funded
- 0.5 Mile Marker

Fall Line Trail Segments

5D
\$5.1M - \$5.3M

5C
\$15.0M - \$15.7M

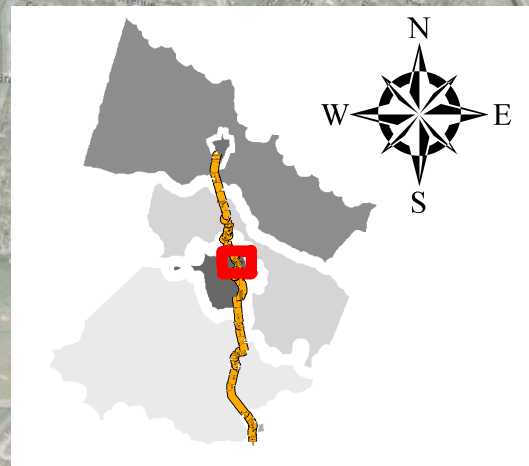
5B2
\$5.4M - \$5.7M

5A3
\$1.1M

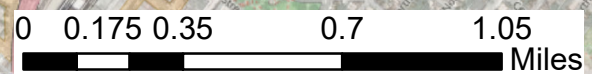
5B1
\$4.1M - \$4.3M

5A2
\$3.0M

5A1
\$3.5M



*Fall Line Trail estimates continue to be updated regularly as funding status changes throughout the corridor.



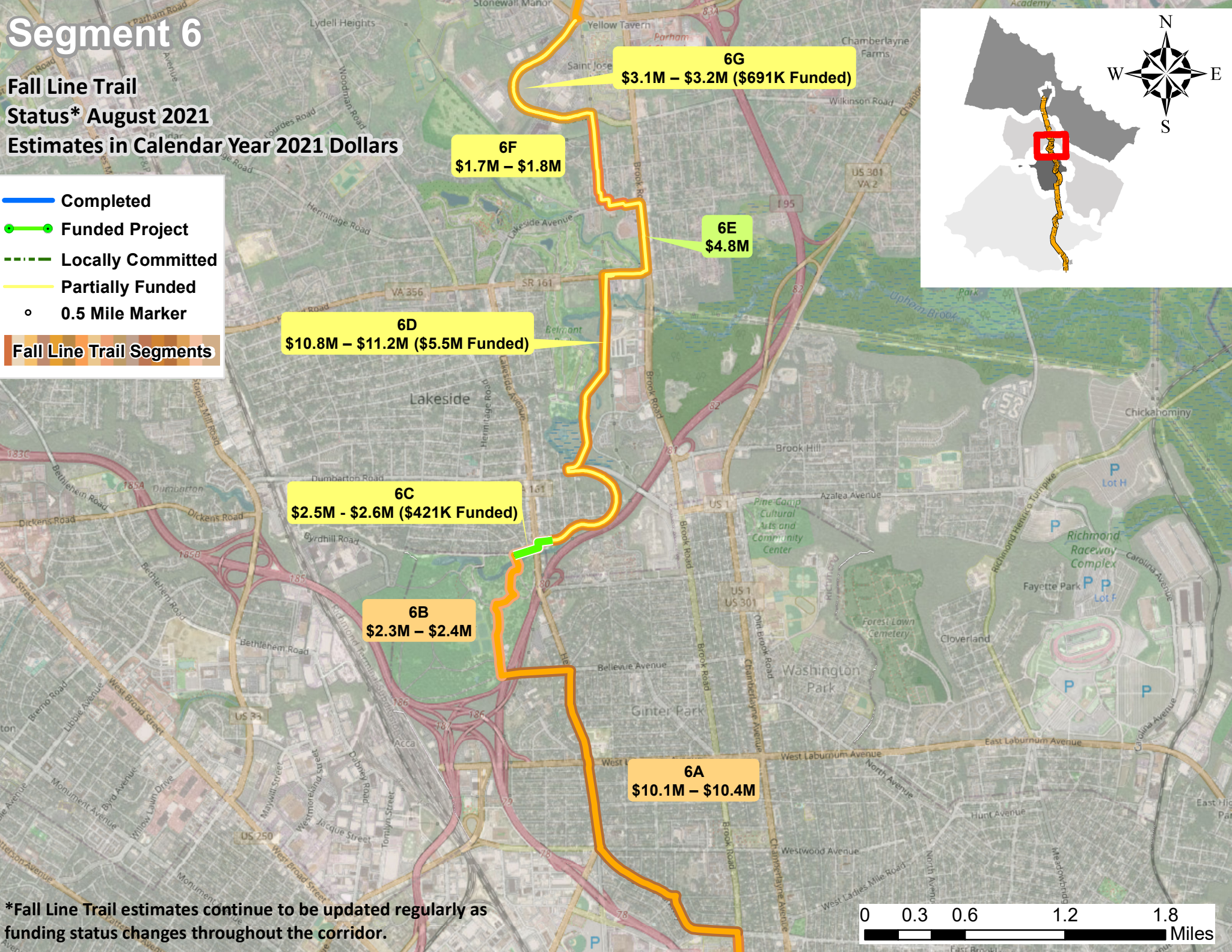
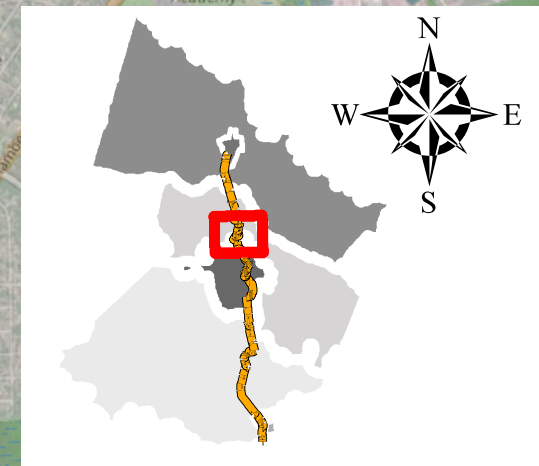
Segment 6

Fall Line Trail

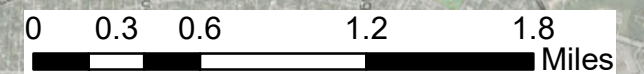
Status* August 2021

Estimates in Calendar Year 2021 Dollars

- Completed
 - Funded Project
 - Locally Committed
 - Partially Funded
 - 0.5 Mile Marker
- Fall Line Trail Segments



*Fall Line Trail estimates continue to be updated regularly as funding status changes throughout the corridor.

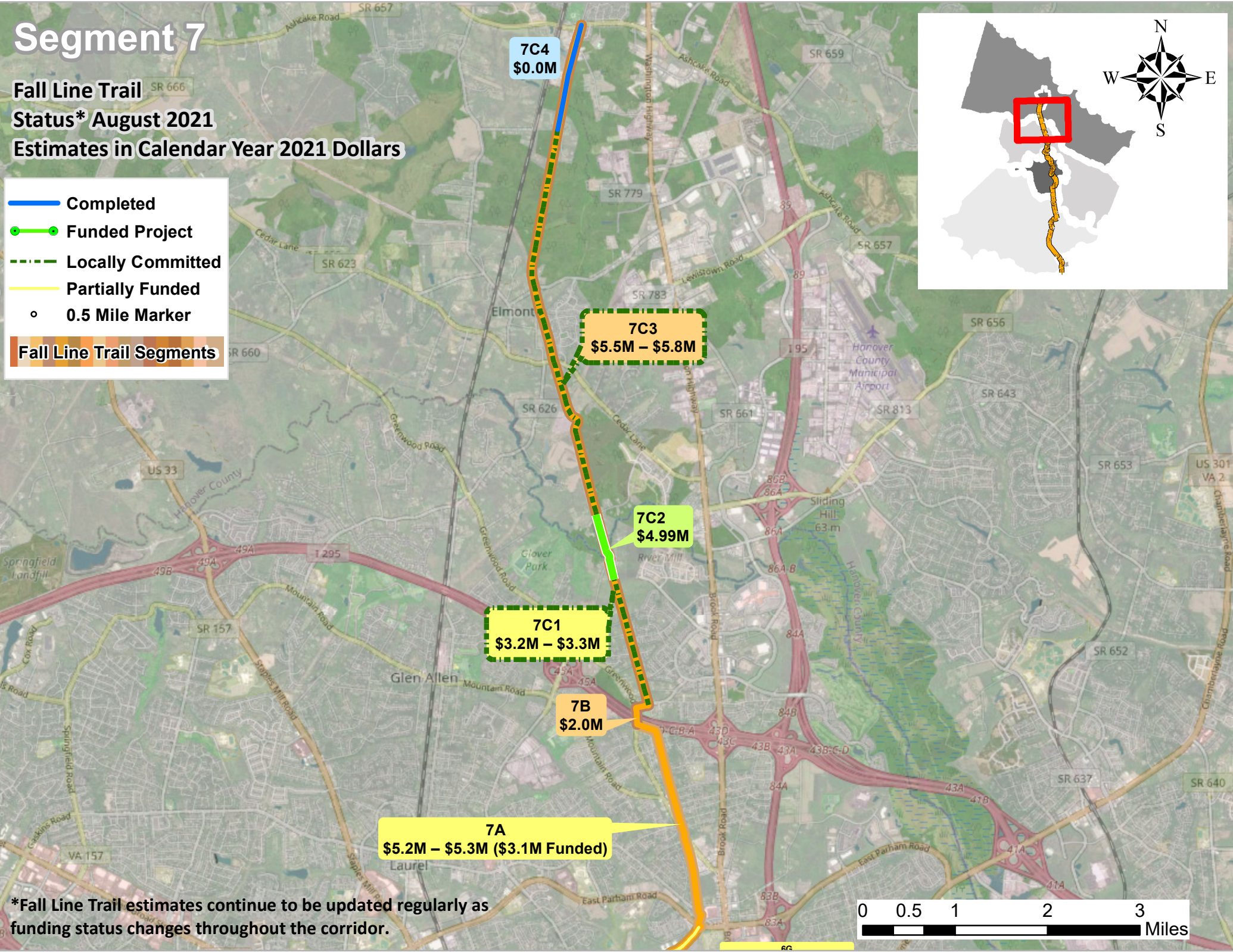
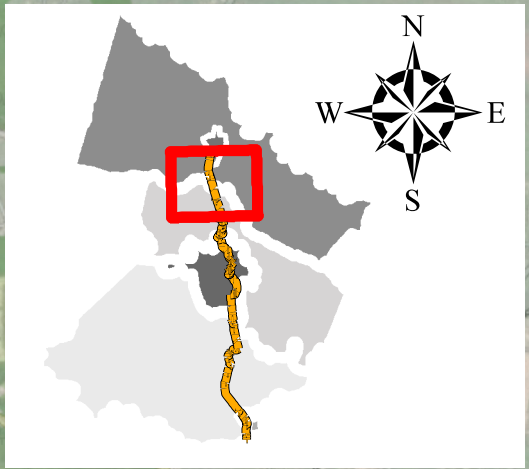


Segment 7

Fall Line Trail
Status* August 2021

Estimates in Calendar Year 2021 Dollars

- Completed
 - Funded Project
 - Locally Committed
 - Partially Funded
 - 0.5 Mile Marker
- Fall Line Trail Segments



*Fall Line Trail estimates continue to be updated regularly as funding status changes throughout the corridor.

