



FALL LINE TRAIL

DB1 & DB2 UPDATE



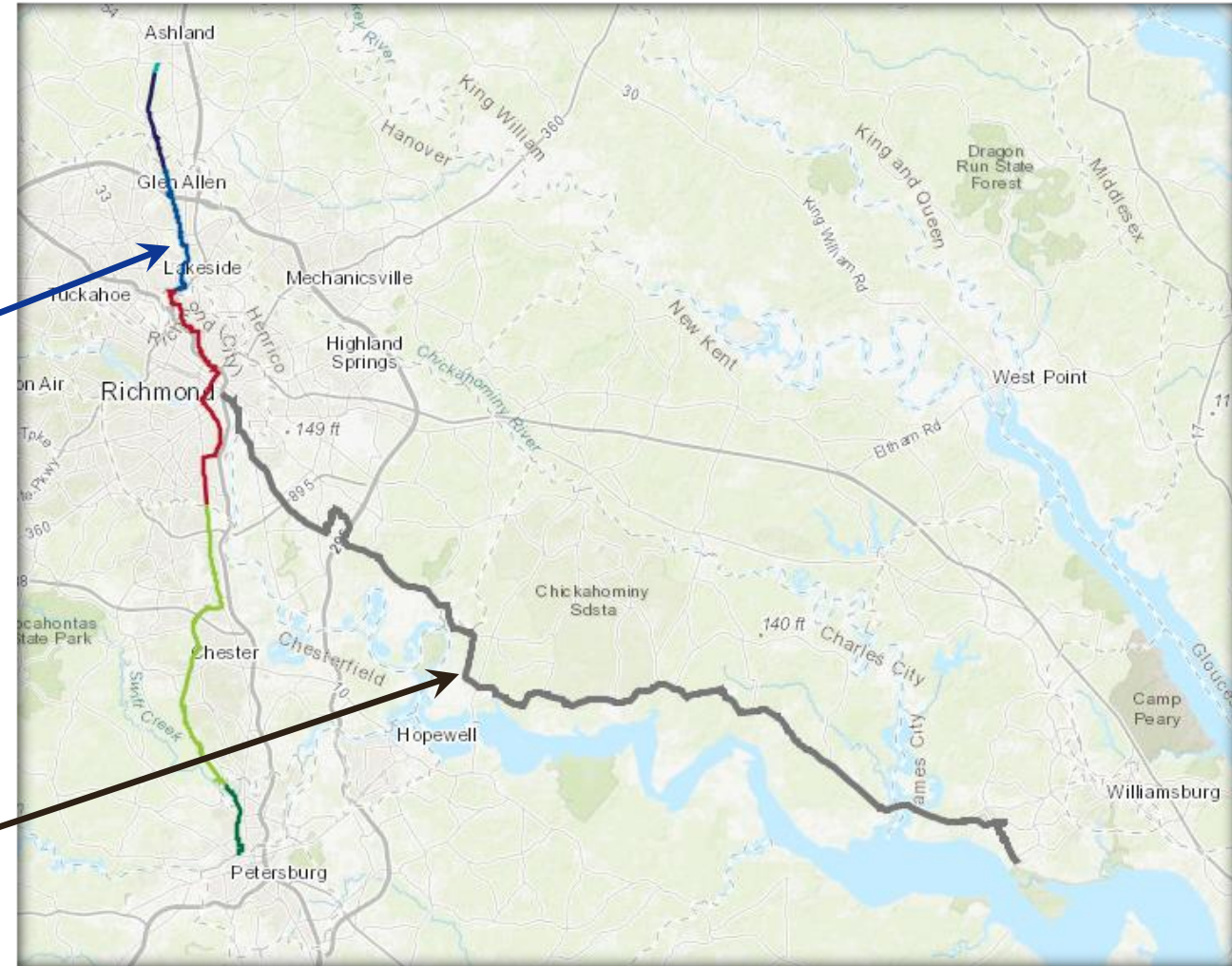
Mark Riblett, PE / Harold Dyson, PE / Morgan Ramsey

May 7, 2025

Overview: Fall Line Trail



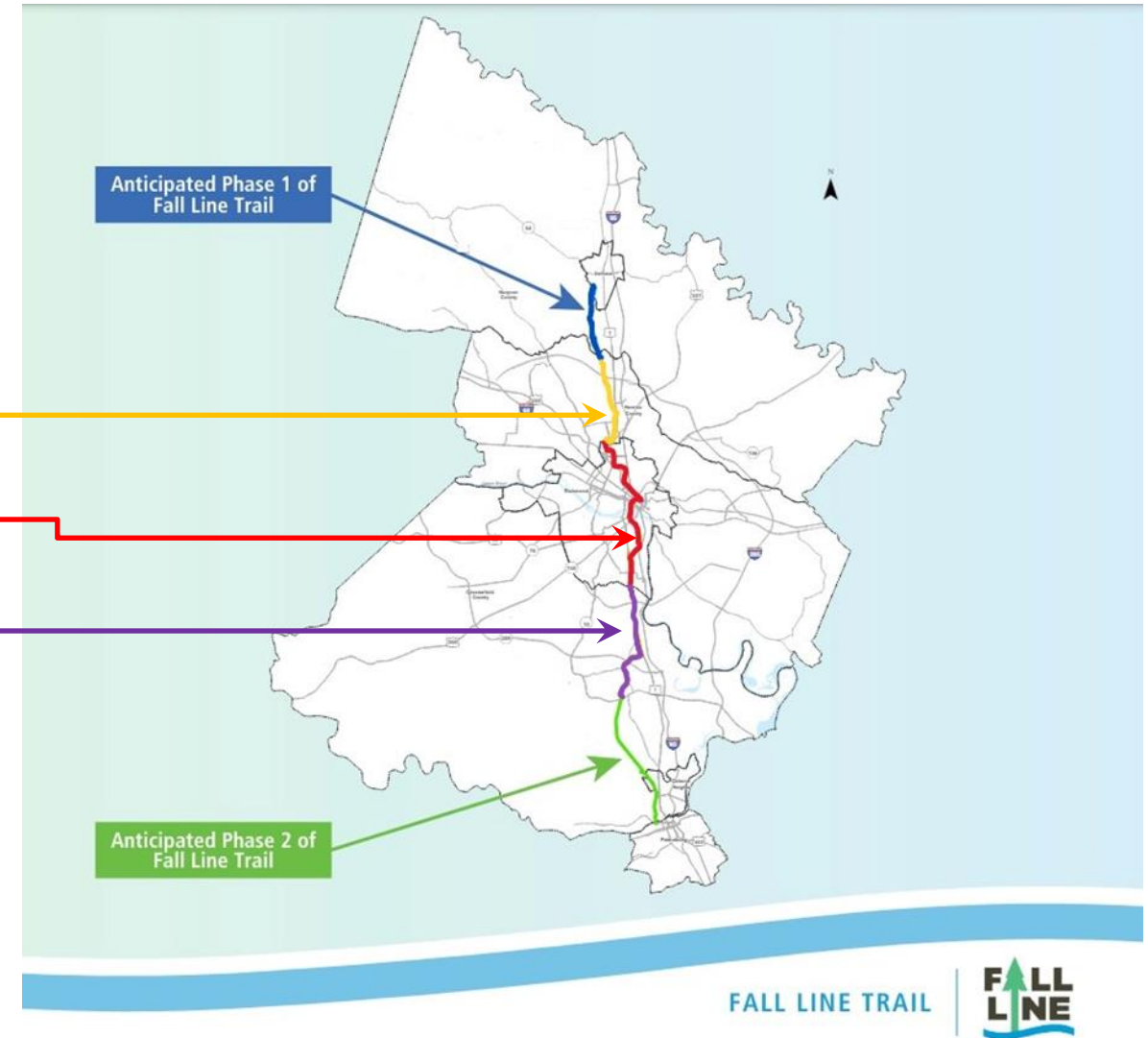
- 43-mile Shared-Use Path
- 10' wide Asphalt Trail
- Ashland
- Hanover
- Henrico
- City of Richmond
- Chesterfield
- Colonial Heights
- Petersburg
- \$300M+ Investment
- Akin to the Capital Trail



Overview: Fall Line Trail Projects/Localities



- **DB1 (Hanover / Ashland / Henrico)**
- **Henrico**
- **City of Richmond**
- **Chesterfield**
- **DB2 (Petersburg / Colonial Heights / Chesterfield)**



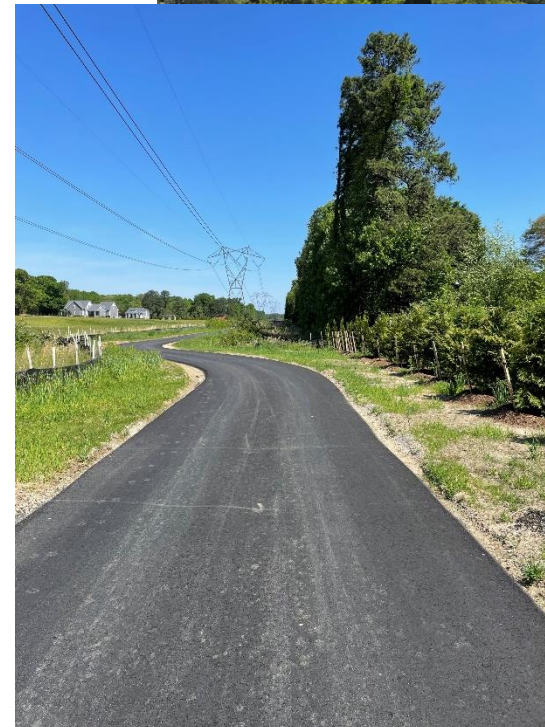
DB1: Northern Section – Henrico/Hanover/Ashland



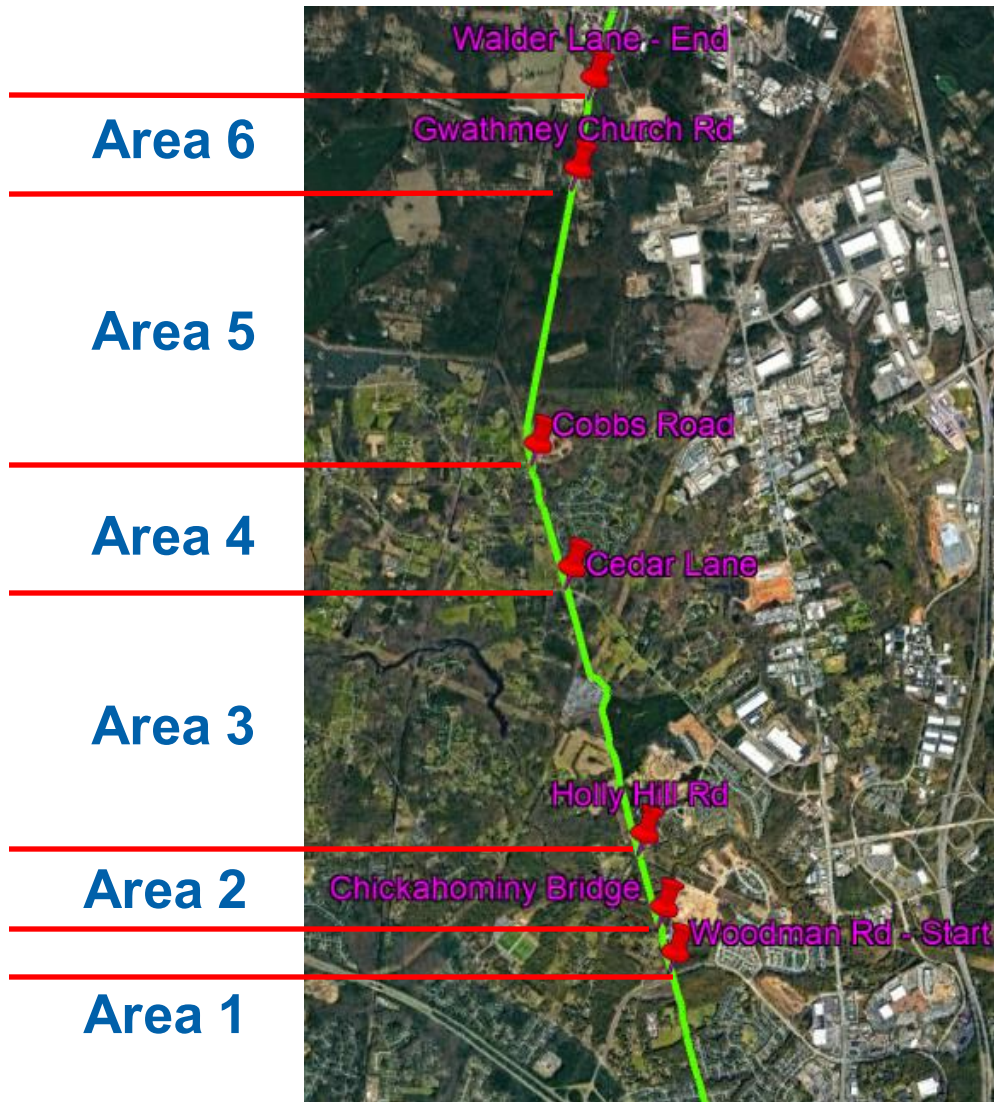
- Notice to Proceed: May 2023
- Contractual Completion Date: Sept 2025
- DB is slated to complete: June 2025

*****3-months early!!!*****

- Total Cost: \$17.5 Million
- Length: 4.8 miles
- Woodman Rd → Walder Lane
(Ashland Trolley Line Trail)



DB1: Northern Section – Area Updates



- **Area 6: Paved (Surface Mix)**
- **Area 5: Paved (Surface Mix)**
- **Area 4: Paved (Surface Mix)**
- **Area 3: Paved (Surface Mix)**
- **Area 2: Grading underway, Wall #3 backfilled (North Side of Chickahominy Bridge), and Grading stone from Winfrey Rd to Bridge**
- **Area 1: Paved (Intermediate Mix) Woodman Rd to Winfrey Rd**

DB1: Northern Section – Henrico/Hanover/Ashland



Project progress has been great!



DB1: Northern Section – Henrico/Hanover/Ashland



- Project bids came in higher than estimated
- All 3 Bids were very close (from \$59M - \$62M)
- VDOT searching for the needed funds – Project must go FORWARD!!!
- ❖ *Our CVTA Partners are playing a big role with this!*
- Notice of Intent to Award this May...June CTB Meeting
- Construction as soon as November 2025 (pending Env permits)
- Completion Date: October 2028



DB2: Southern Section

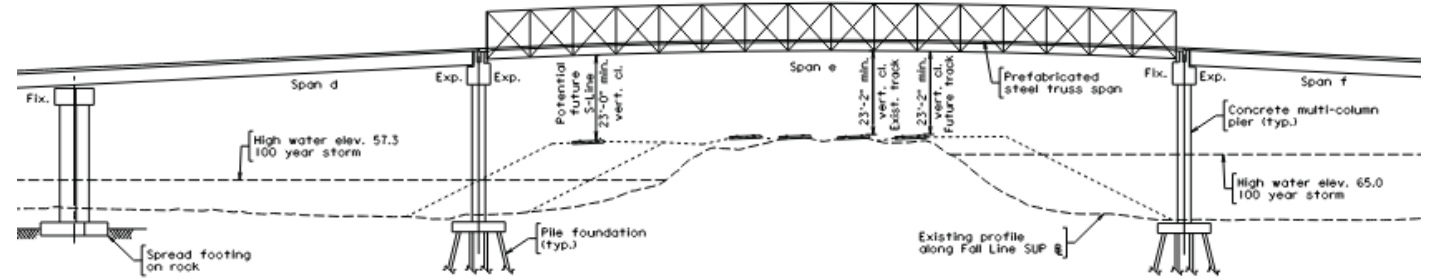


- Length: 10-miles
- Patton Park → Rte. 10
- 8 major structures

- Multiple Trail Enhancements...

- ❖ Many of which will save localities time/money from having to install at a later date!
- ❖ Will create an enriched trail experience & safer crossings!
- ❖ Earlier Completion!

*****Can't share details as NOIA hasn't been issued yet*****



Benefits of the FLT



- **Economic Impact:** The Capital Trail contributed ~\$9 million in economic activity. It is anticipated that the FLT will have a similar impact to the region.
- **Ammenity:** Multi-use trails are a great enhancement for communities. Perfect for physical fitness, commuting, recreational use, and an alternative from the roads.
- **Connectivity:** The FLT will link-up multiple universities, businesses, recreational areas as well as improve access to downtown areas.
- **Safety:** Studies have shown that multi-use trails deter nefarious activities due to the heavy use of healthy-minded people.

Universities and Institutional Uses



QUESTIONS?

