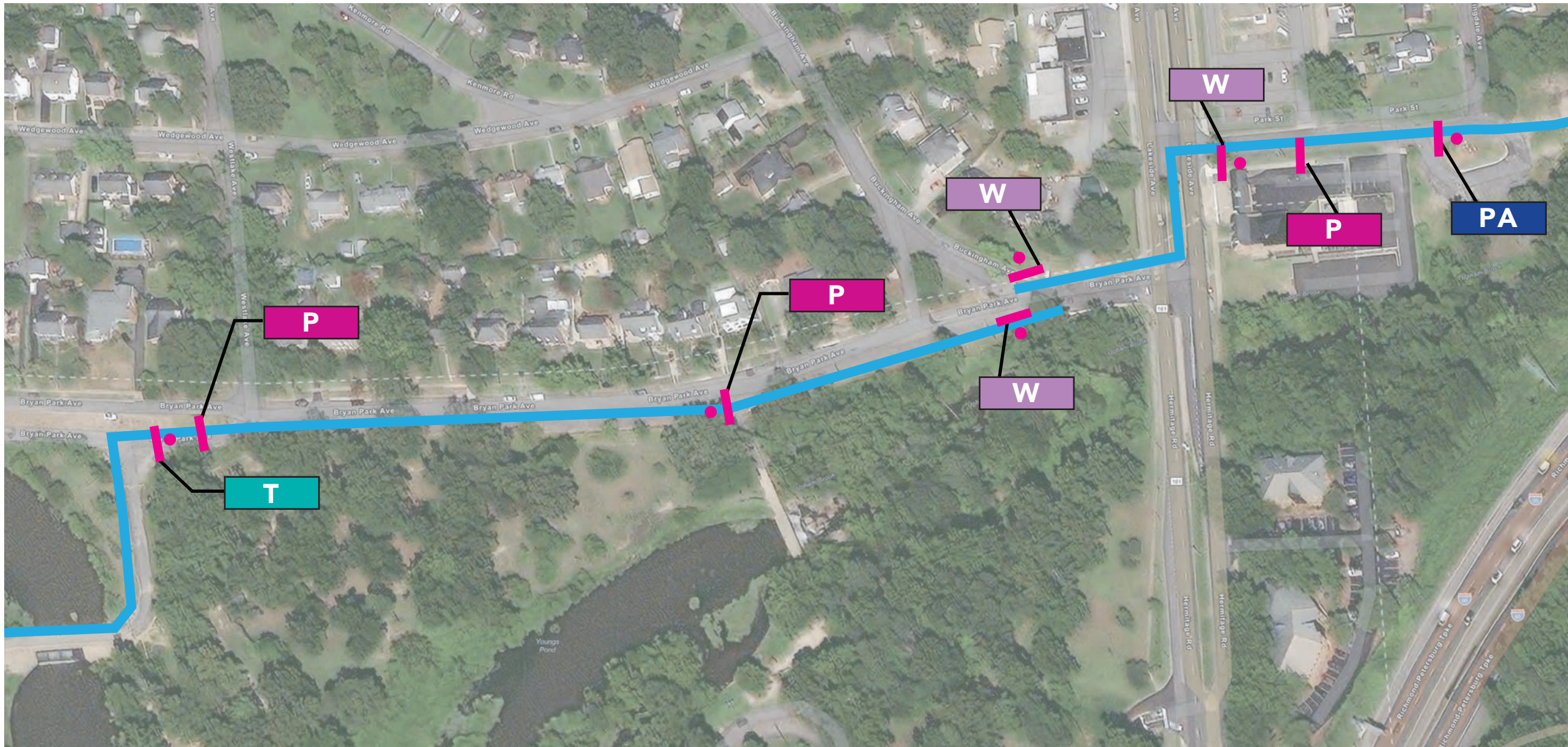


**PROGRAMMING**  
Key Plan  
Henrico County

Bryan Park to Spring Park.



**SIGNTYPES KEY**

- |                                 |                                  |
|---------------------------------|----------------------------------|
| <b>M</b> Mile marker            | <b>T</b> Trailhead Sign          |
| <b>MA</b> Pedestrian Map        | <b>U</b> Urban route Directional |
| <b>P</b> Pedestrian Directional | <b>V</b> Vehicular Directional   |
| <b>PA</b> Parking Sign          | <b>W</b> Warning                 |
| <b>R</b> Regulatory Sign        |                                  |

**TRAIL KEY**

- |                    |                |
|--------------------|----------------|
| Trail Access Point | Park           |
| <b>E</b> Existing  | Existing Trail |
| <b>P</b> Proposed  | Proposed Trail |

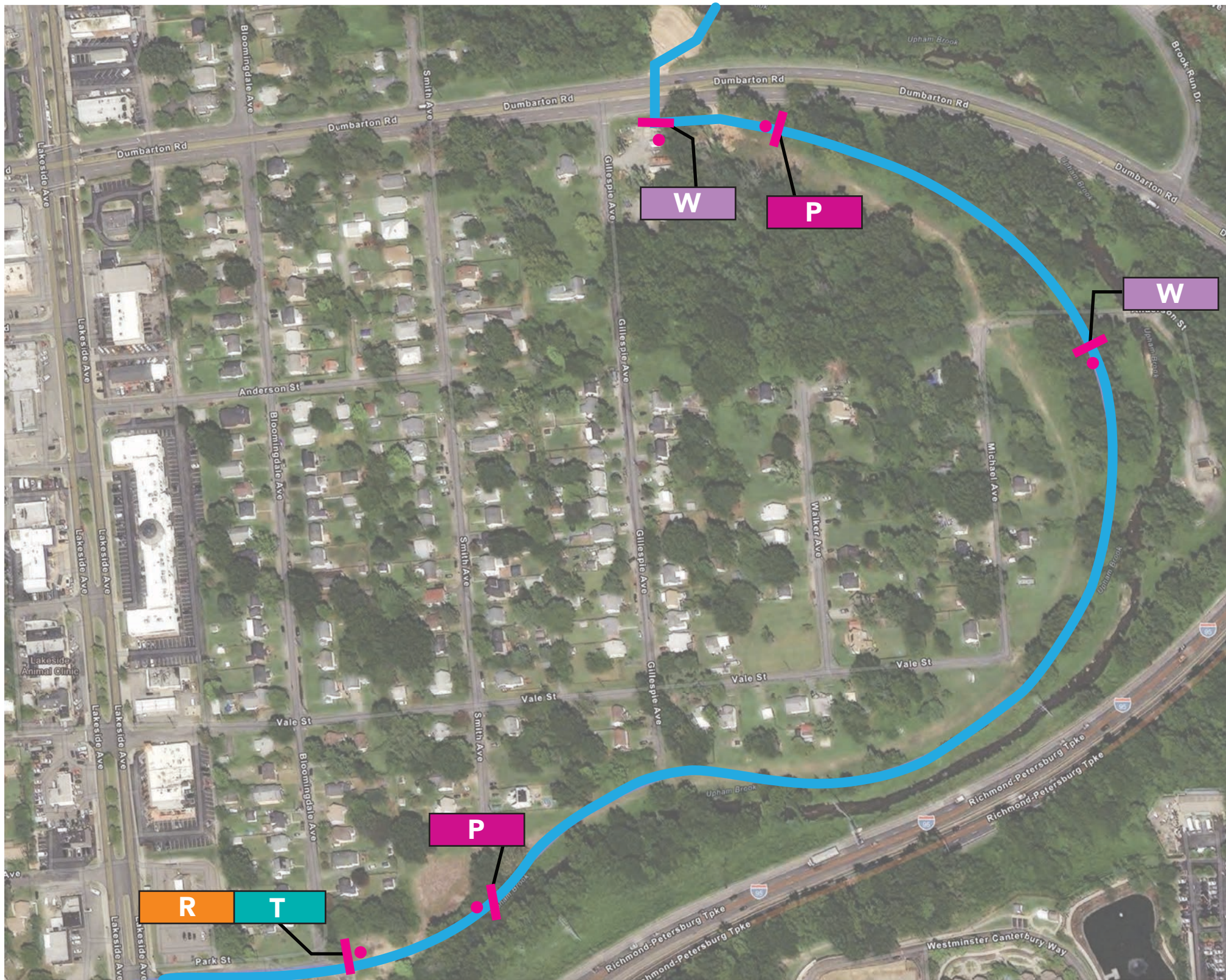
THIS DRAWING REPRESENTS DESIGN INTENT ONLY.

Date	Revisions	Scale
7.8.23		NTS

Client/Project  
CVTA, Virginia  
Wayfinding for Fall Line Trail

PROGRAMMING  
Key Plan  
Henrico County

Spring Park to Dumbarton Rd.



**SIGN TYPES KEY**

- |                                 |                                  |
|---------------------------------|----------------------------------|
| <b>M</b> Mile marker            | <b>T</b> Trailhead Sign          |
| <b>MA</b> Pedestrian Map        | <b>U</b> Urban route Directional |
| <b>P</b> Pedestrian Directional | <b>V</b> Vehicular Directional   |
| <b>PA</b> Parking Sign          | <b>W</b> Warning                 |
| <b>R</b> Regulatory Sign        |                                  |

**TRAIL KEY**

- |                    |                |
|--------------------|----------------|
| Trail Access Point | Park           |
| <b>E</b> Existing  | Existing Trail |
| <b>P</b> Proposed  | Proposed Trail |

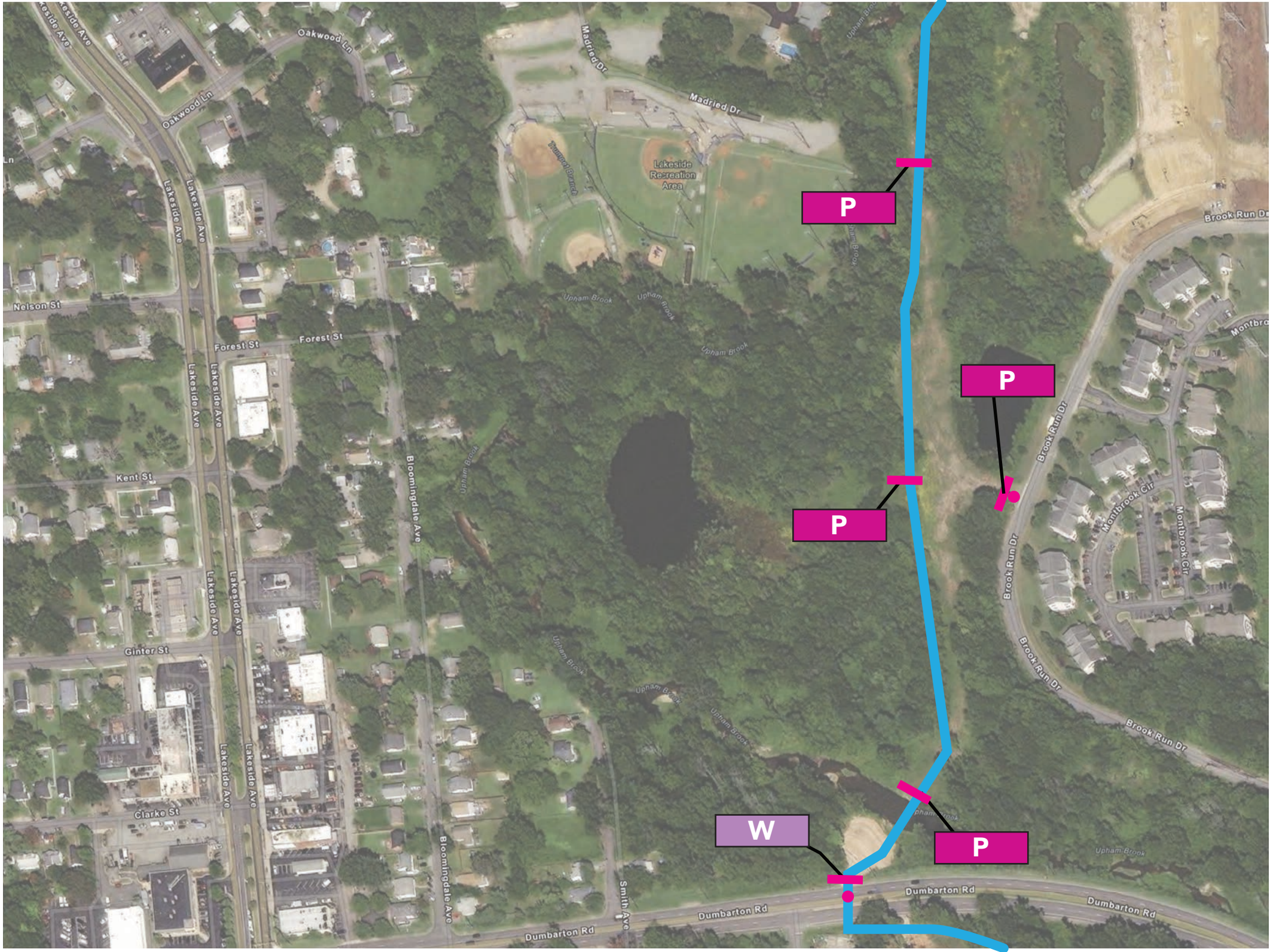
THIS DRAWING REPRESENTS DESIGN INTENT ONLY.

Date	Revisions	Scale
7.8.23		NTS

Client/Project  
CVTA, Virginia  
Wayfinding for Fall Line Trail

PROGRAMMING  
Key Plan  
Henrico County

Dumbarton Rd. to Lakeside Recre-  
ation area.



SIGNTYPES KEY		TRAIL KEY	
<b>M</b>	Mile marker	<b>T</b>	Trailhead Sign
<b>MA</b>	Pedestrian Map	<b>U</b>	Urban route Directional
<b>P</b>	Pedestrian Directional	<b>V</b>	Vehicular Directional
<b>PA</b>	Parking Sign	<b>W</b>	Warning
<b>R</b>	Regulatory Sign	<b>●</b>	Trail Access Point
		<b>E</b>	Existing
		<b>P</b>	Proposed
			Park
			Existing Trail
			Proposed Trail

THIS DRAWING REPRESENTS DESIGN INTENT ONLY.

Date	Revisions	Scale
7.8.23		NTS

Client/Project  
CVTA, Virginia  
Wayfinding for Fall Line Trail

**2.5**

PROGRAMMING  
Key Plan  
Henrico County

Lakeside Recreation area to Hilliard Rd.



**SIGN TYPES KEY**

- |                                 |                                  |
|---------------------------------|----------------------------------|
| <b>M</b> Mile marker            | <b>T</b> Trailhead Sign          |
| <b>MA</b> Pedestrian Map        | <b>U</b> Urban route Directional |
| <b>P</b> Pedestrian Directional | <b>V</b> Vehicular Directional   |
| <b>PA</b> Parking Sign          | <b>W</b> Warning                 |
| <b>R</b> Regulatory Sign        |                                  |

**TRAIL KEY**

- |                    |                   |                |
|--------------------|-------------------|----------------|
| <b>E</b> Existing  | <b>P</b> Proposed | Park           |
| Trail Access Point | Existing Trail    | Proposed Trail |

THIS DRAWING REPRESENTS DESIGN INTENT ONLY.

Date	Revisions	Scale
7.8.23		NTS

Client/Project  
CVTA, Virginia  
Wayfinding for Fall Line Trail